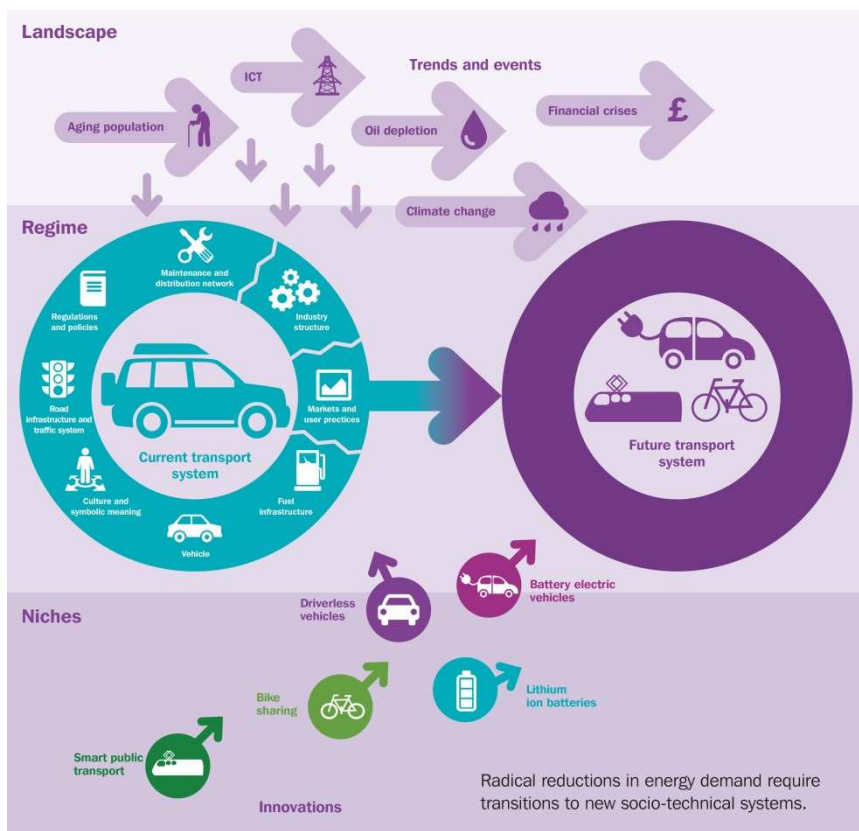


**Our mission is to advance innovative approaches to the study of 'transport futures' through interdisciplinary research with a strong social science orientation.**

**Our research is organised into four themes:**

- **Energy and Environment**
- **Governance and Public Policy**
- **Culture and Society**
- **Health and Wellbeing**

Much of our work concentrates on **cities and sustainability**. A key concern is how emissions and energy consumption from transport can be reduced drastically across the global North and South in ways that are socially just and secure mobility's many economic, social and other benefits. Our research therefore critically analyses the role of technology (including IT), policy, politics, culture, behaviour change, community action and innovation in transition pathways to more sustainable futures.



## Cities

tend to offer favourable conditions for innovation and transition in transport:

- Less 'lock-in' in sprawling, auto oriented built environments
- Critical mass of citizens and businesses willing to experiment and engage with disruptive innovations
- More proactive and progressive politicians and policymakers than at (supra)national levels

Yet, they often lack the means of national governments. They are also sites of struggle over sustainable mobility and of deep social inequalities, raising questions over who will benefit from innovations in urban transport. Such innovations are intensely political.



## What makes low energy innovations in urban mobility flourish?

Comparative research in medium-sized UK cities (Liverpool, Brighton and Oxford) suggests that the following factors and conditions are critically important:

- Leadership – support and vision from politicians and middle ranking staff
- Financial support from national and EU level government
- Strong linkages with actors in cities elsewhere
- A civic society that clearly articulates its social needs
- Place-based institutions empowering start-ups, social entrepreneurs, etc.
- History dependence – success tends to breed success

